

fitt composites

FITT RESOURCES COATINGS RANGE GUIDE



advanced composites

protect equipment against abrasion, corrosion, erosion and chemical attack

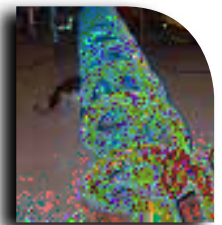
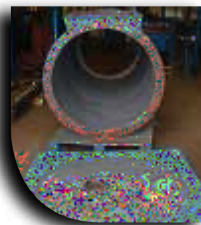
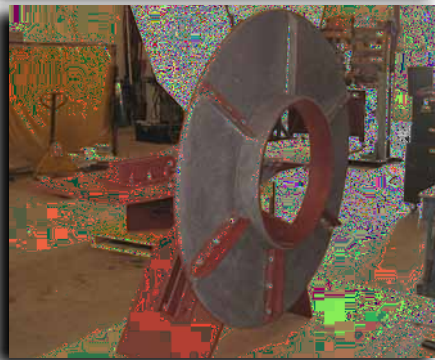
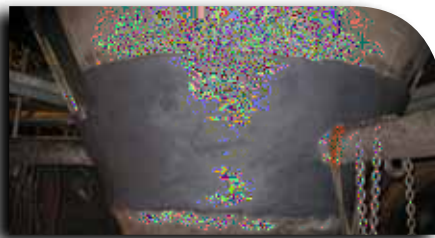
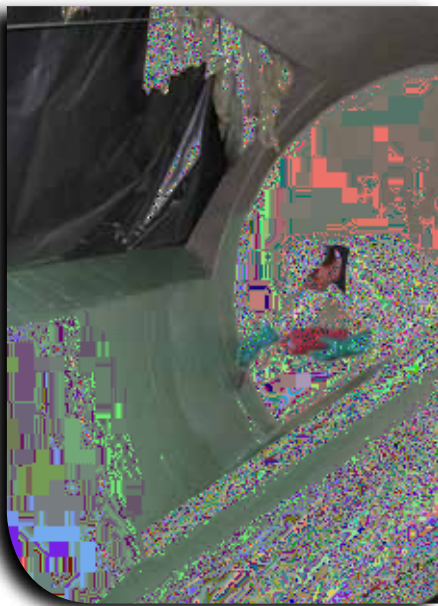
The FITT Resources composite service illustrates the company's dedication to adapting emerging technologies for industrial applications to protect your equipment.

Innovative polymer and composite technology applications

Fitt composite products are engineered to protect equipment against abrasion, corrosion, erosion and chemical attack.

By offering long term performance proficiency to expensive critical equipment, Fitt composite materials have been used to protect:

- Pumps
- Fans
- Valves
- Screws
- Tanks
- Scrubber systems
- Heat exchangers
- Containment bunds
- Conveyors
- Rotary valves
- Pipework
- Cyclones
- Chutes
- Silos



Our advanced composite products are engineered to protect equipment against abrasion, corrosion, erosion and chemical attack. Innovative polymer and composite technology coatings offer long-term performance by protecting critical equipment in a broad range of applications and industries, including oil & gas, mining & mineral processing, marine, petrochemical, power & water utilities, steel manufacturer and food & beverage.

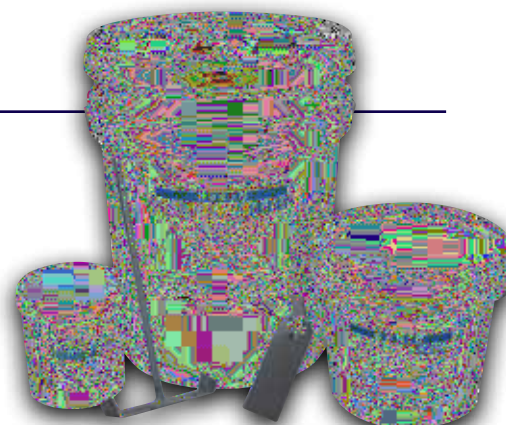


severe abrasion high build coatings

PRODUCT TYPE	PRODUCT NAME	DESCRIPTION
Severe Abrasion Fast Cure (Abrasion Low Impact)	2500	Two hour cure, for shutdown repairs on equipment that suffers high wear rates from sliding abrasion and low levels of impact, the high strength epoxy resins with a dense loading of alumina and silicon carbide ceramic allows you to quickly and cost effectively repair chutes, pipes, hoppers and screens. Coat Thickness 3 -30mm
Severe Abrasion Fast Cure (Abrasion with Impact)	5500	Two hour cure for shutdown repairs on equipment that suffers high wear rates and impact from materials up to 150mm diameter, useful for repairing areas in chutes where conventional ceramic tiles are disbonding due to impact. Ballistic grade aramid fibre reinforced wear compound is designed to quickly repair, rebuild & protect materials handling equipment from abrasion & high impact. The high strength epoxy resins with a dense loading of alumina and silicon carbide allows for cost effective shut door repairs. Coat Thickness 3 -30mm.
Severe Abrasion Fast Cure	Wear Protect	Low Cost two hour cure for shutdown repairs, wear protect is an easily applied fast set, super tough beaded wearing compound for quick repairs and protection of material handling equipment. (Competitive alternative to Ludowichi's Wear Resist)
Severe Abrasion Standard Cure	4000	Ballistic grade aramid fibre reinforcement in the polymer matrix combined with the high strength epoxy resins, alumina beads and silicon carbide gives excellent wear resistant characteristics & a low friction surface. Provides excellent wear protection in a wide range of equipment including centrifuges, pumps, chutes, hoppers & screens that are subject to severe abrasion and impact. Coat Thickness 3 -30mm.



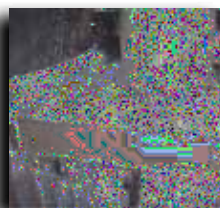
Fitt composite products are manufactured by Hudco Industrial Products, Inc. Hudco provides innovative solutions' through research, technology, outstanding service and consistently superior products and cost-effective solutions. Their effective use of advanced ceramics, carbides, plastics and other wear resistant materials dramatically improves the service life of material handling equipment.



advanced composites

concrete repair/protection & flooring products

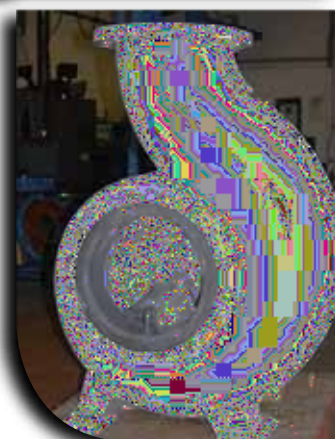
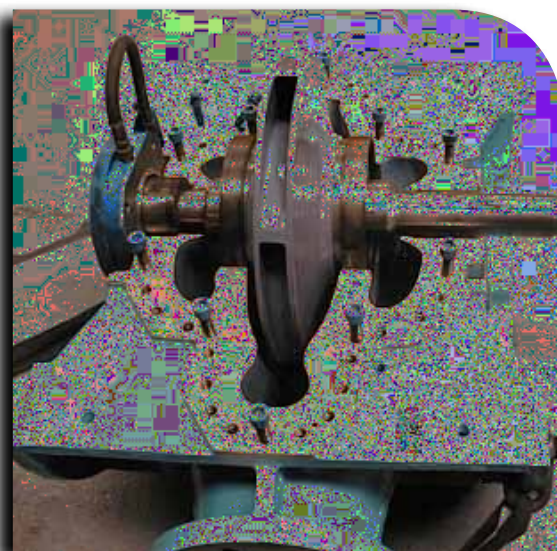
PRODUCT TYPE	PRODUCT NAME	DESCRIPTION
Anti Skid Flooring	Anti Skid Yellow	Gives unparalleled traction on slippery surfaces such as steps and wet floors. It is easily applied by a roller. Anti Skid offers a tough wear resistant surface that is not affected by high traffic. Anti Skid can be applied to concrete & metal surfaces. Coat Thickness 2mm
Acid Resistant Floor Coating	8500 Acid	Acid Resistant floor coating which offers a tough acid resistant surface that is not affected by high Traffic. 8500 gives unparalleled durability on wall and floor surfaces. 8500 is designed for high load bearing floors. Aluminium oxide grit can be sprinkled onto the wet surfaces to impart a non skid surface. Coat Thickness 0.35mm
Epoxy Industrial Floor Coating	Industrial Flooring	2 part 100% solids epoxy that gives unparalleled protection against abrasion and corrosion. It is easily applied by squeegee and back rolled with a paint roller. Industrial flooring offers a tough wear resistant surface that is not affected by high traffic. Coat thickness 0.35mm.
High Build Coating For Concrete Repair / Protection	Polygrout	Is a high strength heavy duty non shrink epoxy for concrete repair, protection and equipment installation. Gives long service life, high resistance to chemical attack, high resistance to physical Degradation, exceptional dimensional stability 90% cure in 24 hours. Coat Thickness 4 -50mm
High Build Epoxy For Wet Concrete / Underwater	4200	Wear Resistant Epoxy for underwater and wet surfaces, high strength beaded wear material that bonds to wet or underwater surfaces that delivers the reliable bonds comparable with epoxies on dry surfaces. It produces a strong trowelable mortar when mixed with an equal amount of dry sand which can be applied to vertical or overhead surfaces without sagging or product run off. Can also be used as a protective liner for pipes. Coat thickness 4 – 100mm.





erosion, corrosion & fluid flow coatings

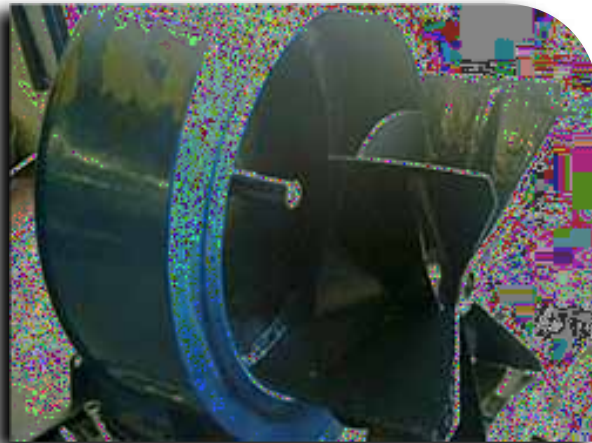
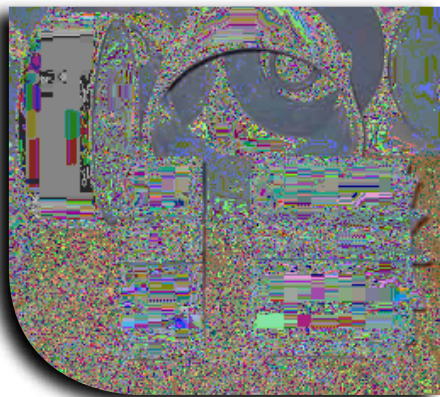
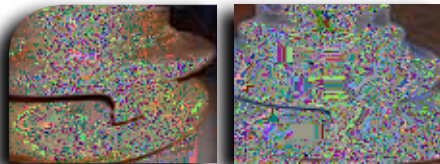
PRODUCT TYPE	PRODUCT NAME	DESCRIPTION
Erosion & Corrosion	Ceramic Surface	Low viscosity brush able / spray able ceramic epoxy used to protect equipment from corrosion, chemical attack and electrolysis, where a diamond hard finish and good fluid dynamics are important. Coat Thickness 0.7 mm.
Erosion & Corrosion	Ceramic Rebuild	Hand applied ceramic paste designed to rebuild equipment badly worn or damaged by exposure to abrasive solids moving at high velocities, also protects equipment from chemical attack & electrolysis. Coat Thickness 1 - 4 mm
Fluid Flow	Slick Stuff	Slick stuff is specially designed to provide a low friction surface. It differs from other surface Coating's because it is filled with ultra high density polymer particles & lubricants in a high performance epoxy matrix. It provides excellent fluid flow properties in moving liquids in less abrasive fluids. Also provides excellent corrosion and chemical resistance.



advanced composites

machinable products

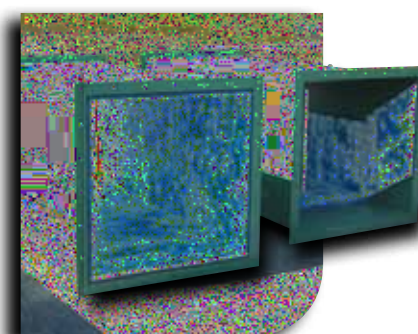
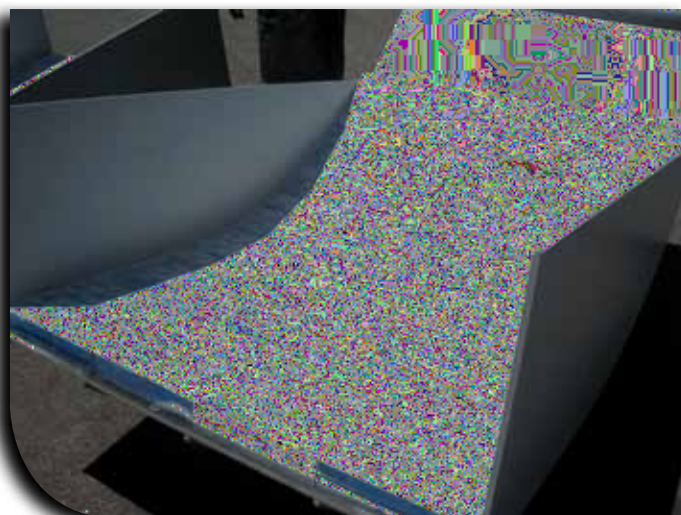
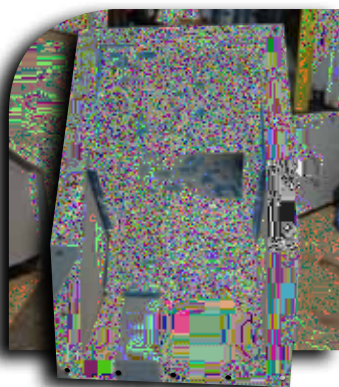
PRODUCT TYPE	PRODUCT NAME	DESCRIPTION
Machinable SS filled Polymer	Metal Fix	Metal Fix is formulated from high performance polymers filled with 316 stainless steel to provide excellent repair capabilities for damaged metal. It is machinable using common metal cutting tool tips. Typical applications include worn shafts, cracked castings, worn bearing housings, hydraulic rams, heat exchanger housings and valve bodies. Coat thickness 2-6mm.
Machinable Carbide/Ceramic	2000R	2000R is machinable with diamond tip tools, it has a dense concentration of silicon carbide and ceramic granules held within high strength epoxy resins. 2000R can resist abrasion and corrosion and can be used to repair / extend the operating life of pumps, rolls, screw conveyors, fans and other equipment that is subject to wear. Coat thickness 4-10 mm.





wear panel

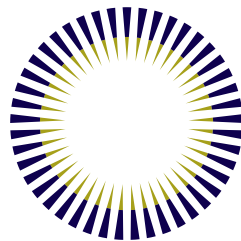
PRODUCT TYPE	PRODUCT NAME	DESCRIPTION	
The wear-resistant panel system that makes steel and chrome carbide wear plate obsolete	WearSpan®	<p>In chutes, hoppers, bins and other bulk handling equipment subject to flows of rock, coal, grain cement, wood chips and other abrasive materials up to 6" in diameter, there is simply no comparison. WearSpan® will easily outperform steel. WearSpan® will always yield a dramatic decrease in Cost Per Ton (CPT). Unlike WearSpan®, Chrome carbides are heavy, hard to install, expensive, and have a rough wear surface. WearSpan® can be modified to provide optimum performance in unusual circumstances.</p> <p>Operating cost reductions of 25-90% are typical when WearSpan® is used to replace steels, chrome carbide overlays, rubber, and urethane.</p>	<ul style="list-style-type: none"> ○ no welding ○ easy installation ○ lightweight ○ reduces noise ○ corrosion resistant ○ impact resistant ○ smooth surface ○ no waste ○ reduces inventory
Rubber ceramic high performance wear liners	Rubber Ceramic	<p>High density ceramic cylinders or balls moulded in a high tensile strength rubber matrix, mounted on steel backing plates.</p> <p>The bonding process ensures that the rubber-ceramic bond exceeds the tensile strength of the rubber used in these liners, meaning that the ceramics will remain in the rubber matrix, retaining maximum wear protection through the life of the liner.</p> <p>Rubber Ceramic wear liners are particularly suitable for critical and aggressive conditions in process equipment such as bins, deflectors, chutes, dead bed lip liners, skirt liners, pipes and SAG mill trunions.</p>	<ul style="list-style-type: none"> ○ superior wear life ○ easy installation ○ favourable noise characteristics ○ low cost per tonne



Our goal is to become the respected supplier partner to industry, by offering quality, innovation and reliability across a growing range of products and services associated with cost effective repair and reducing wear and corrosion rates in rotating and materials handling equipment



ISO 9001



FITT
RESOURCES

engineered for service